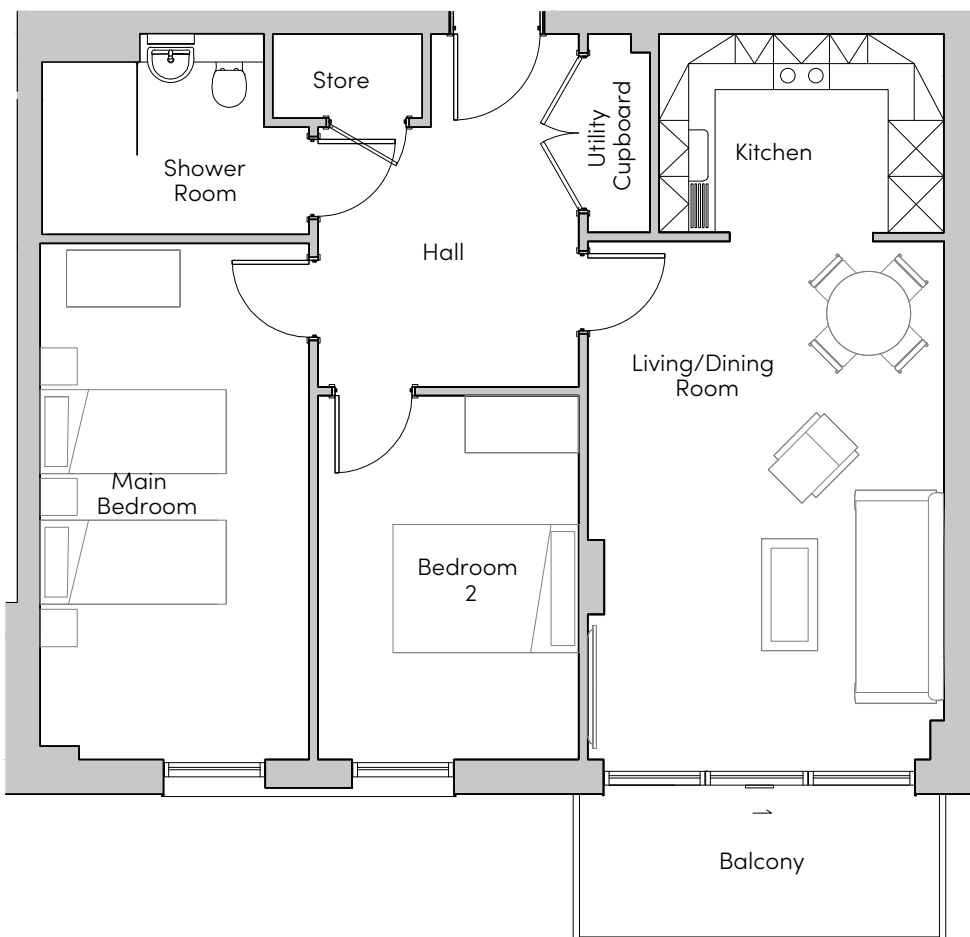


Mayfield Watford

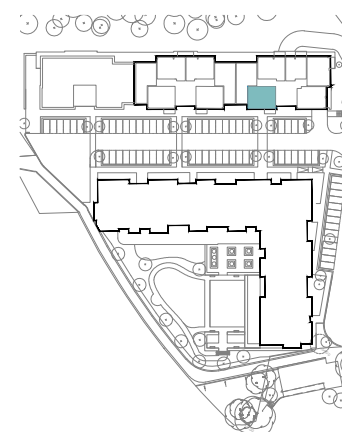
74, 86, 98, 104 Kingfisher Court



MAYFIELD
• VILLAGES •



Internal Measurements	Metric (m)	Imperial (ft)
Living/Dining Room	5.56 x 3.83	18'3" x 12'7"
Kitchen	3.06 x 2.13	10'0" x 7'0"
Main Bedroom	5.54 x 2.89	18'2" x 9'6"
Bedroom 2	3.91 x 2.80	12'10" x 9'2"
Balcony (approx)	3.87 x 1.53	12'8" x 5'0"



These floorplans are illustrative and for marketing purposes. Maximum measurements are shown for the main area of the room only. Furniture shown to illustrate possible room layouts and not included in sale. Designs vary according to plot. All details should be checked at the Sales Office.

Mayfield Watford
Heron Place, Colnebank Drive, Watford
Hertfordshire WD18 0LQ
01923 882 613
www.mayfieldvillages.co.uk

Mayfield Watford

74, 86, 98, 104 Kingfisher Court



MAYFIELD
• VILLAGES •



Two bedroom apartment

Two bedroom apartment with a large main bedroom and private, south-east facing balcony accessed via the open plan living/dining room.

Property specifications:

- Spacious main bedroom
- Second double bedroom
- Beckermann kitchen with fitted appliances
- Large, open plan living/dining room with private balcony
- Utility cupboard with Zanussi washer/dryer
- Ideal Standard Tempo shower room
- Hallway storage
- Mayfield Club membership
- Lift access