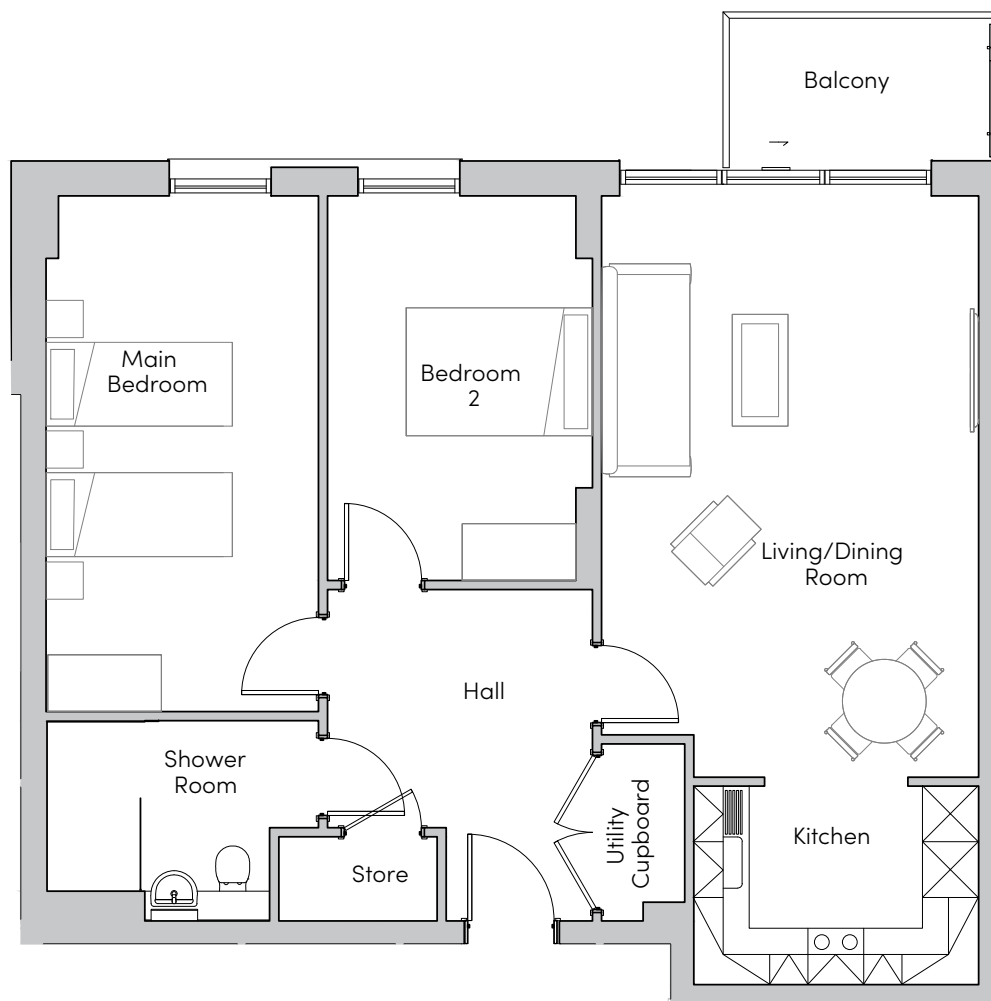


Mayfield Watford

29, 47, 65, 83, 95 Kingfisher Court



MAYFIELD
• VILLAGES •



Internal Measurements	Metric (m)	Imperial (ft)
Living/Dining Room	6.24 x 4.05	20'6" x 13'3"
Kitchen	3.06 x 2.13	10'0" x 7'0"
Main Bedroom	5.54 x 2.93	18'2" x 9'7"
Bedroom 2	4.13 x 2.85	13'7" x 9'4"
Balcony (approx)	2.80 x 1.53	9'2" x 5'0"



These floorplans are illustrative and for marketing purposes. Maximum measurements are shown for the main area of the room only. Furniture shown to illustrate possible room layouts and not included in sale. Designs vary according to plot. All details should be checked at the Sales Office.

Mayfield Watford
Heron Place, Colnebank Drive, Watford
Hertfordshire WD18 0LQ
01923 882 613
www.mayfieldvillages.co.uk

Plots 176, 194, 212

323031

Photos for illustration purposes only

Mayfield Watford

29, 47, 65, 83, 95 Kingfisher Court



MAYFIELD
• VILLAGES •



Two bedroom apartment

A spacious two bedroom apartment with open plan living space leading onto a private balcony. The apartment has lift access and is carpeted and decorated throughout.

Property specifications:

- Two bedroom apartment
- Beckermann kitchen with fitted appliances
- Large, open plan living/dining room with private balcony
- Utility cupboard with Zanussi washer/dryer
- Ideal Standard Tempo shower room
- Hallway storage
- Mayfield Club membership
- Lift access