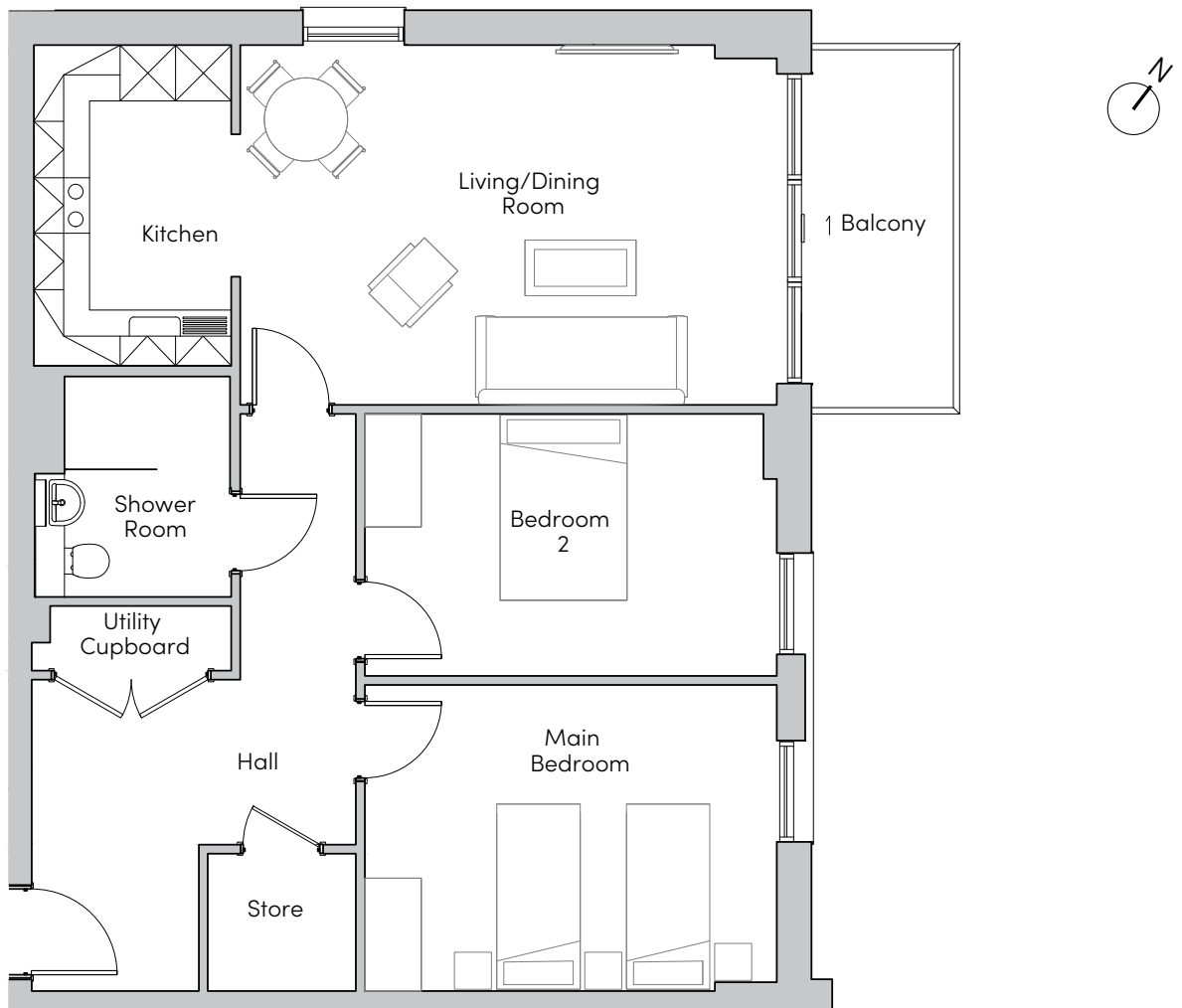


# Mayfield Watford

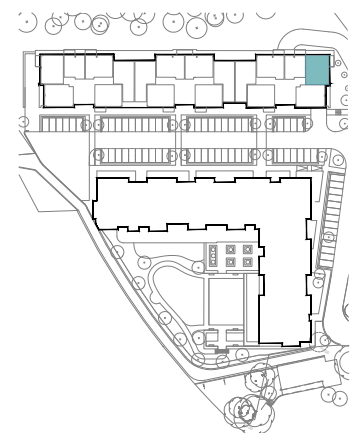
24, 42, 60, 78, 90, 102, 108 Kingfisher Court



**MAYFIELD**  
• VILLAGES •



Internal Measurements	Metric (m)	Imperial (ft)
Living/Dining Room	5.80 x 3.89	19'0" x 12'9"
Kitchen	3.47 x 2.13	11'4" x 7'0"
Main Bedroom	4.45 x 3.31	14'7" x 10'0"
Bedroom 2	4.45 x 2.83	14'7" x 9'3"
Balcony (approx)	3.87 x 1.53	12'8" x 5'0"



These floorplans are illustrative and for marketing purposes. Maximum measurements are shown for the main area of the room only. Furniture shown to illustrate possible room layouts and not included in sale. Designs vary according to plot. All details should be checked at the Sales Office.

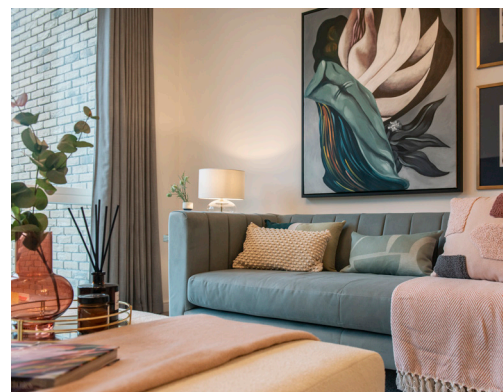
Mayfield Watford  
Heron Place, Colnebank Drive, Watford  
Hertfordshire WD18 0LQ  
01923 882 613  
[www.mayfieldvillages.co.uk](http://www.mayfieldvillages.co.uk)

# Mayfield Watford

24, 42, 60, 78, 90, 102, 108 Kingfisher Court



**MAYFIELD**  
• VILLAGES •



## Two bedroom apartment

This apartment has an open plan kitchen/living room with direct access onto a private balcony. There are two double bedrooms, shower room and a utility and store cupboard in the hallway.

### Property specifications:

- Two bedroom apartment
- Beckermann kitchen with fitted appliances
- Large, open plan living/dining room with private balcony
- Utility cupboard with Zanussi washer/dryer
- Ideal Standard Tempo shower room
- Hallway storage
- Mayfield Club membership
- Lift access