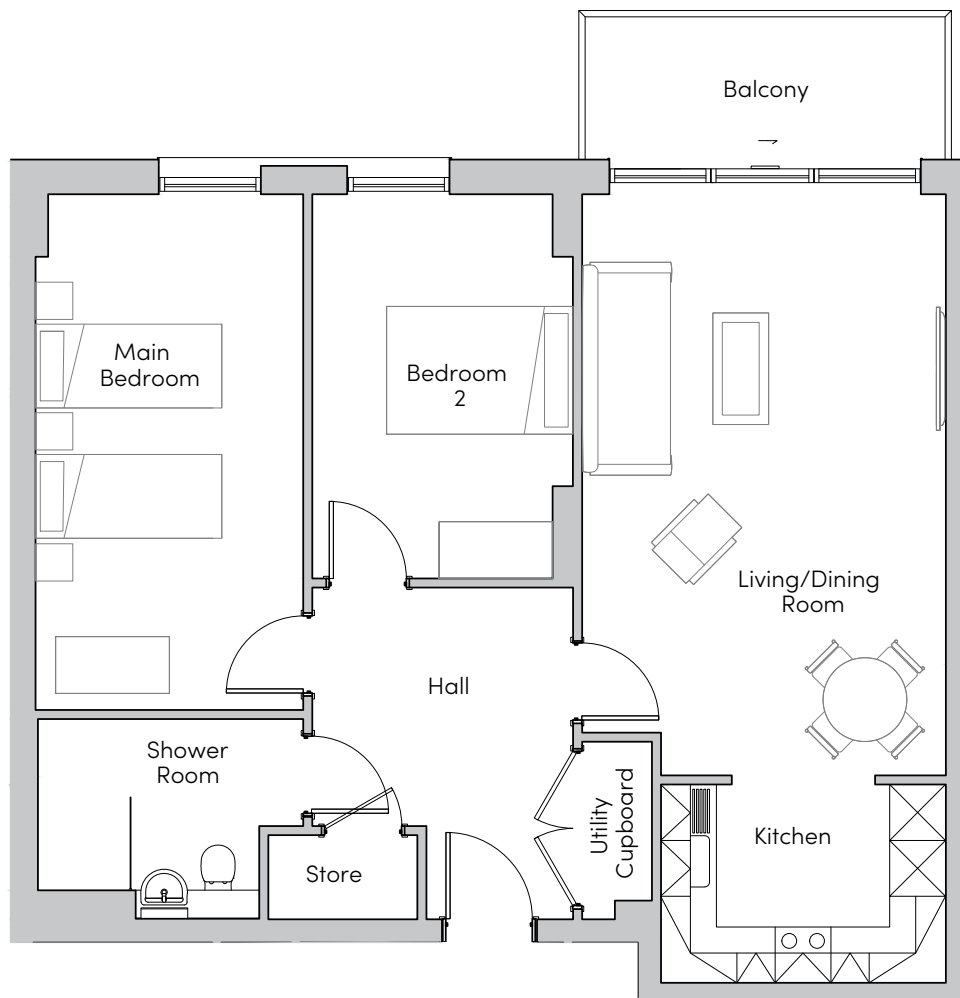


# Mayfield Watford

22, 40, 58, 76, 88, 100, 106 Kingfisher Court



**MAYFIELD**  
• VILLAGES •



Internal Measurements	Metric (m)	Imperial (ft)
Living/Dining Room	6.24 x 3.91	20'6" x 12'10"
Kitchen	3.06 x 2.13	10'0" x 7'0"
Main Bedroom	5.54 x 2.88	18'2" x 9'5"
Bedroom 2	4.13 x 2.80	13'6" x 9'2"
Balcony (approx)	3.87 x 1.53	12'8" x 5'0"



These floorplans are illustrative and for marketing purposes. Maximum measurements are shown for the main area of the room only. Furniture shown to illustrate possible room layouts and not included in sale. Designs vary according to plot. All details should be checked at the Sales Office.

Plots 169, 187, 205

323031

Mayfield Watford  
Heron Place, Colnebank Drive, Watford  
Hertfordshire WD18 0LQ  
01923 882 613  
[www.mayfieldvillages.co.uk](http://www.mayfieldvillages.co.uk)

Photos for illustration purposes only

# Mayfield Watford

22, 40, 58, 76, 88, 100, 106 Kingfisher Court



MAYFIELD  
• VILLAGES •



## Two bedroom apartment

A two bedroom property with open plan living/dining room leading out onto the balcony. There is a spacious main bedroom, second double bedroom and modern shower room.

### Property specifications:

- Two bedroom apartment
- Ideal Standard Tempo shower room
- Beckermann kitchen with fitted appliances
- Large, open plan living/dining room with private balcony
- Utility cupboard with Zanussi washer/dryer
- Hallway storage
- Lift access
- Mayfield Club membership