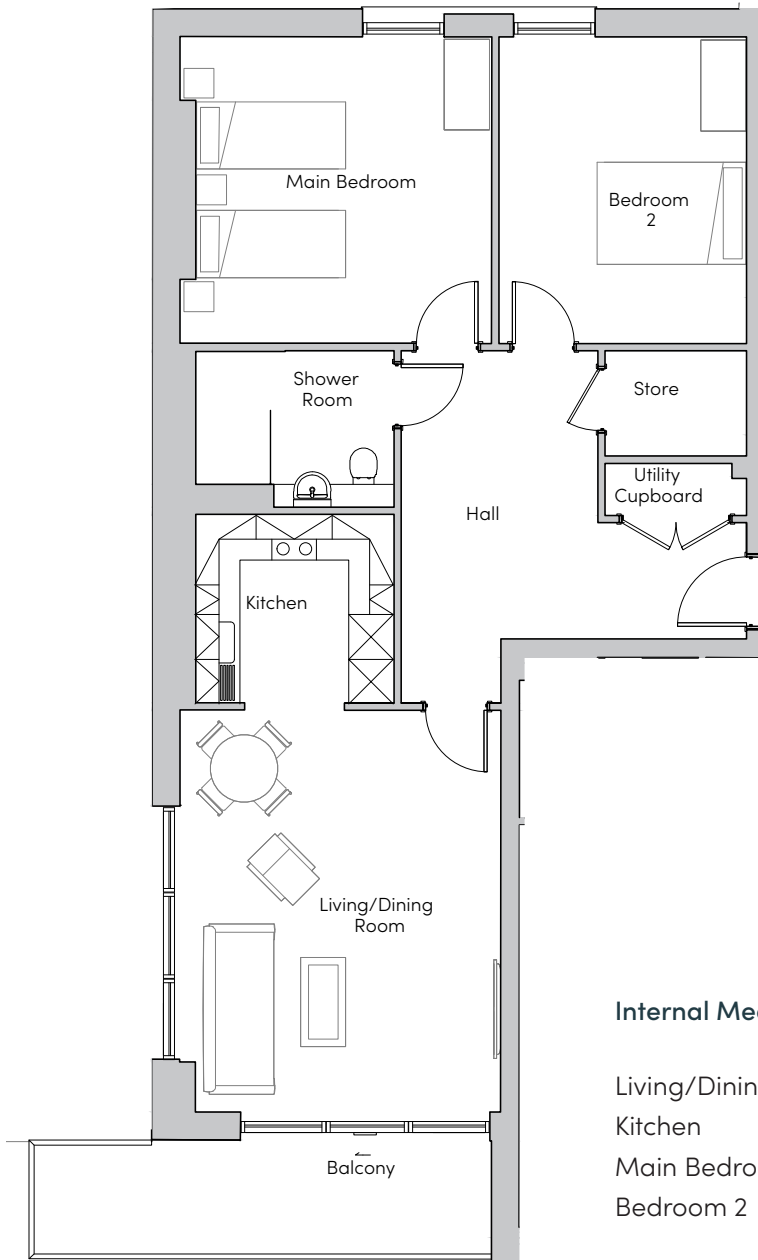


Mayfield Watford

99 Kingfisher Court



MAYFIELD
• VILLAGES •



Internal Measurements

Living/Dining Room

Kitchen

Main Bedroom

Bedroom 2

Terrace (approx)

Metric (m)

5.39 x 4.31

2.66 x 2.53

4.12 x 4.18

4.12 x 3.33

6.13 x 1.49

Imperial (ft)

17'8" x 14'2"

8'9" x 8'4"

13'6" x 13'9"

13'6" x 10'11"

20'1" x 4'11"

These floorplans are illustrative and for marketing purposes. Maximum measurements are shown for the main area of the room only. Furniture shown to illustrate possible room layouts and not included in sale. Designs vary according to plot. All details should be checked at the Sales Office.

Plot 246

323031

Mayfield Watford
Heron Place, Colnebank Drive, Watford
Hertfordshire WD18 0LQ

01923 882 613

www.mayfieldvillages.co.uk

Photos for illustration purposes only

Mayfield Watford

99 Kingfisher Court



MAYFIELD
• VILLAGES •



Two bedroom apartment

Located on the eighth floor this spacious two bedroom apartment benefits from a dual-aspect, open plan living/dining room with private balcony. The second bedroom is a good size, and a utility cupboard and a generous storage cupboard are accessible via the hallway.

Property specifications:

- Two bedroom apartment
- Beckermann kitchen with fitted appliances
- Large, open plan living/dining room
- Ideal Standard Tempo shower room
- Private south-east facing balcony
- Utility cupboard with Zanussi washer/dryer
- Hallway storage
- Lift access
- Mayfield Club membership

