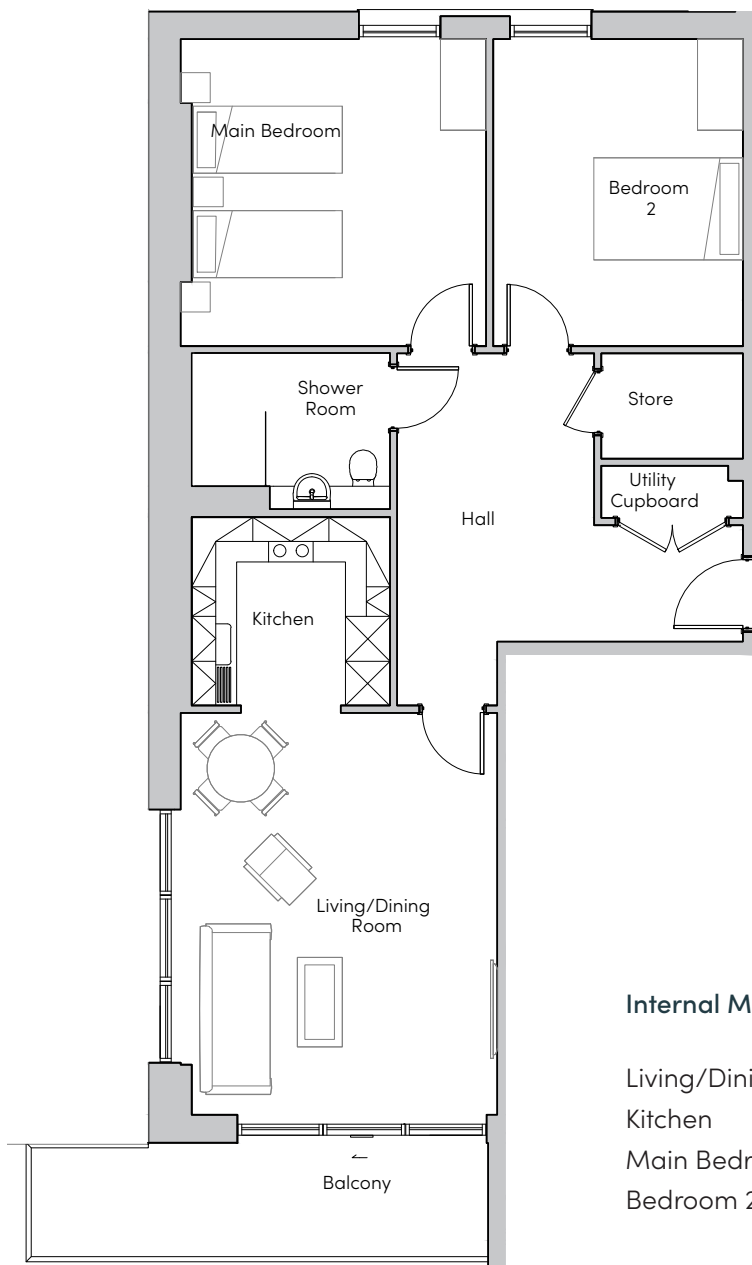


Mayfield Watford

82 Kingfisher Court



MAYFIELD
• VILLAGES •



Internal Measurements	Metric (m)	Imperial (ft)
Living/Dining Room	5.39 x 4.25	17'8" x 13'11"
Kitchen	2.66 x 2.53	8'9" x 8'4"
Main Bedroom	4.12 x 4.10	13'6" x 13'5"
Bedroom 2	4.12 x 3.35	13'6" x 11'0"
Balcony (approx)	6.13 x 1.53	20'1" x 5'0"

These floorplans are illustrative and for marketing purposes. Maximum measurements are shown for the main area of the room only. Furniture shown to illustrate possible room layouts and not included in sale. Designs vary according to plot. All details should be checked at the Sales Office.

Mayfield Watford
Heron Place, Colnebank Drive, Watford
Hertfordshire WD18 0LQ
01923 882 613
www.mayfieldvillages.co.uk

Mayfield Watford

82 Kingfisher Court



MAYFIELD
• VILLAGES •



Two bedroom apartment

Located on the sixth floor, this two bedroom apartment benefits from two double bedrooms, a spacious hallway leading to a large dual-aspect, open plan kitchen living/room with south-east facing private balcony.

Property specifications:

- Two bedroom apartment located on the sixth floor
- Beckermann kitchen with fitted appliances
- Large, dual-aspect open plan living/dining room
- Private south-east facing balcony
- Utility cupboard with Zanussi washer/dryer
- Ideal Standard Tempo shower room
- Hallway storage
- Mayfield Club membership
- Lift access