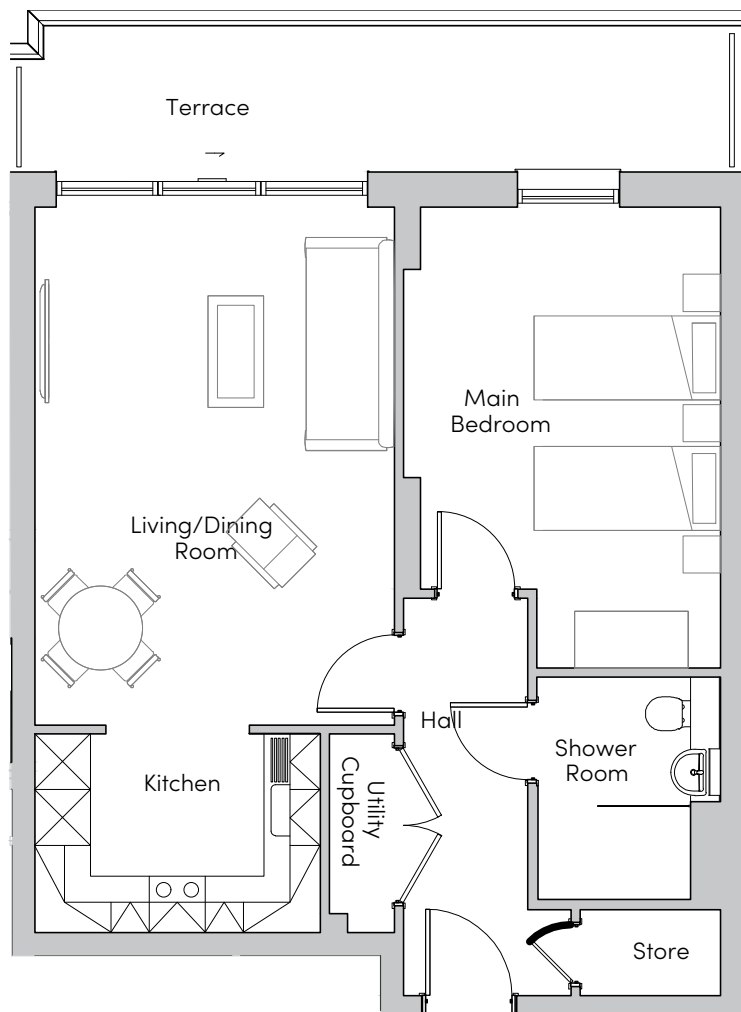


Mayfield Watford

17 Kingfisher Court



MAYFIELD
• VILLAGES •



| Internal Measurements | Metric (m) | Imperial (ft) |
|-----------------------|-------------|---------------|
| Living/Dining Room | 5.56 x 3.86 | 18'3" x 12'8" |
| Kitchen | 3.06 x 2.13 | 10'0" x 7'0" |
| Main Bedroom | 4.10 x 3.40 | 13'5" x 11'2" |
| Terrace (approx) | 7.60 x 1.58 | 24'11" x 5'2" |



These floorplans are illustrative and for marketing purposes. Maximum measurements are shown for the main area of the room only. Furniture shown to illustrate possible room layouts and not included in sale. Designs vary according to plot. All details should be checked at the Sales Office.

Mayfield Watford
Heron Place, Colnebank Drive, Watford
Hertfordshire WD18 0LQ
01923 882 613
www.mayfieldvillages.co.uk

Mayfield Watford

17 Kingfisher Court



MAYFIELD
• VILLAGES •



One bedroom apartment

This apartment has an open plan kitchen/living room with direct access onto a private terrace. There is a large spacious bedroom, shower room and a utility and store cupboard in the hallway.

Property specifications:

- One bedroom apartment
- Ideal Standard Tempo shower room
- Beckermann kitchen with fitted appliances
- Large, open plan living/dining room with private terrace
- Utility cupboard with Zanussi washer/dryer
- Hallway storage
- Lift access
- Mayfield Club membership