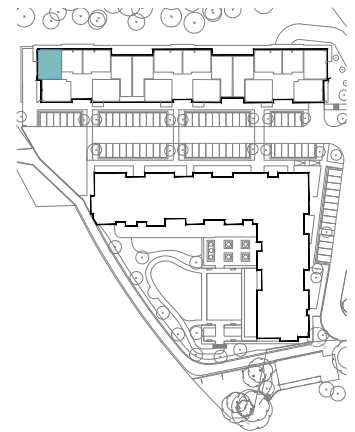
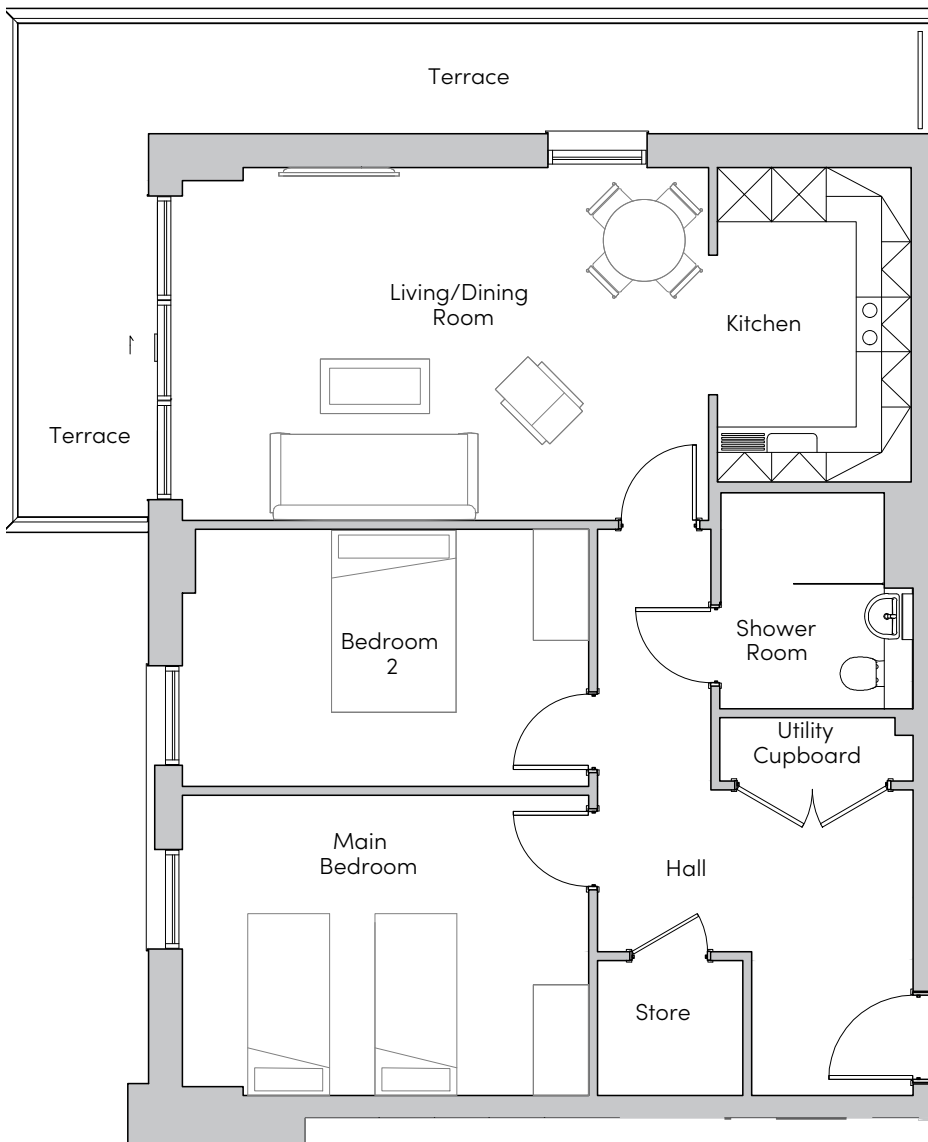


# Mayfield Watford

16 Kingfisher Court



**MAYFIELD**  
• VILLAGES •



| Internal Measurements | Metric (m)  | Imperial (ft)  |
|-----------------------|-------------|----------------|
| Living/Dining Room    | 5.80 x 3.89 | 19'0" x 12'9"  |
| Kitchen               | 3.47 x 2.13 | 11'4" x 7'0"   |
| Main Bedroom          | 4.48 x 3.31 | 14'8" x 10'10" |
| Bedroom 2             | 4.48 x 2.83 | 14'8" x 9'3"   |
| Terrace (approx)      | 9.91 x 1.22 | 32'6" x 4'0"   |
|                       | 4.23 x 1.43 | 13'10" x 4'8"  |

These floorplans are illustrative and for marketing purposes. Maximum measurements are shown for the main area of the room only. Furniture shown to illustrate possible room layouts and not included in sale. Designs vary according to plot. All details should be checked at the Sales Office.

Mayfield Watford  
Heron Place, Colnebank Drive, Watford  
Hertfordshire WD18 0LQ  
01923 882 613  
[www.mayfieldvillages.co.uk](http://www.mayfieldvillages.co.uk)

# Mayfield Watford

16 Kingfisher Court



**MAYFIELD**  
• VILLAGES •



## Two bedroom apartment

A lovely two bedroom apartment, located on the second floor. This apartment has an open plan kitchen/living room with direct access onto a wrap-around private terrace. There is a large spacious main bedroom, second bedroom and a shower room.

### Property specifications:

- Two bedroom apartment
- Ideal Standard Tempo shower room
- Beckermann kitchen with fitted appliances
- Large, open plan living/dining room
- Dual-aspect wrap-around private terrace
- Utility cupboard with Zanussi washer/dryer
- Hallway storage
- Lift access
- Mayfield Club membership

